



Whilst every effort is made to give a fair description, the accuracy of these particulars is not guaranteed, neither do they constitute an offer or contract.

MATHESONS ESTATE AGENTS have not tested any apparatus, equipment, fitting or services and so cannot verify that they are in working order. The buyer is advised to obtain verification from their solicitor or surveyor. Measurements are correct to within +/- 6 A sonic tape is used. None of the statements contained in these particulars or any of our properties are to be relied upon as a representation of fact.

166 Manor Park Road
Harlesden
London
NW10 4JT
T: 020 8965 2250
E: sales@mathesonsestates.com
www.mathesonsestates.com



Erconwald Street, East Acton, W12 0BU

Asking Price £535,000 Freehold



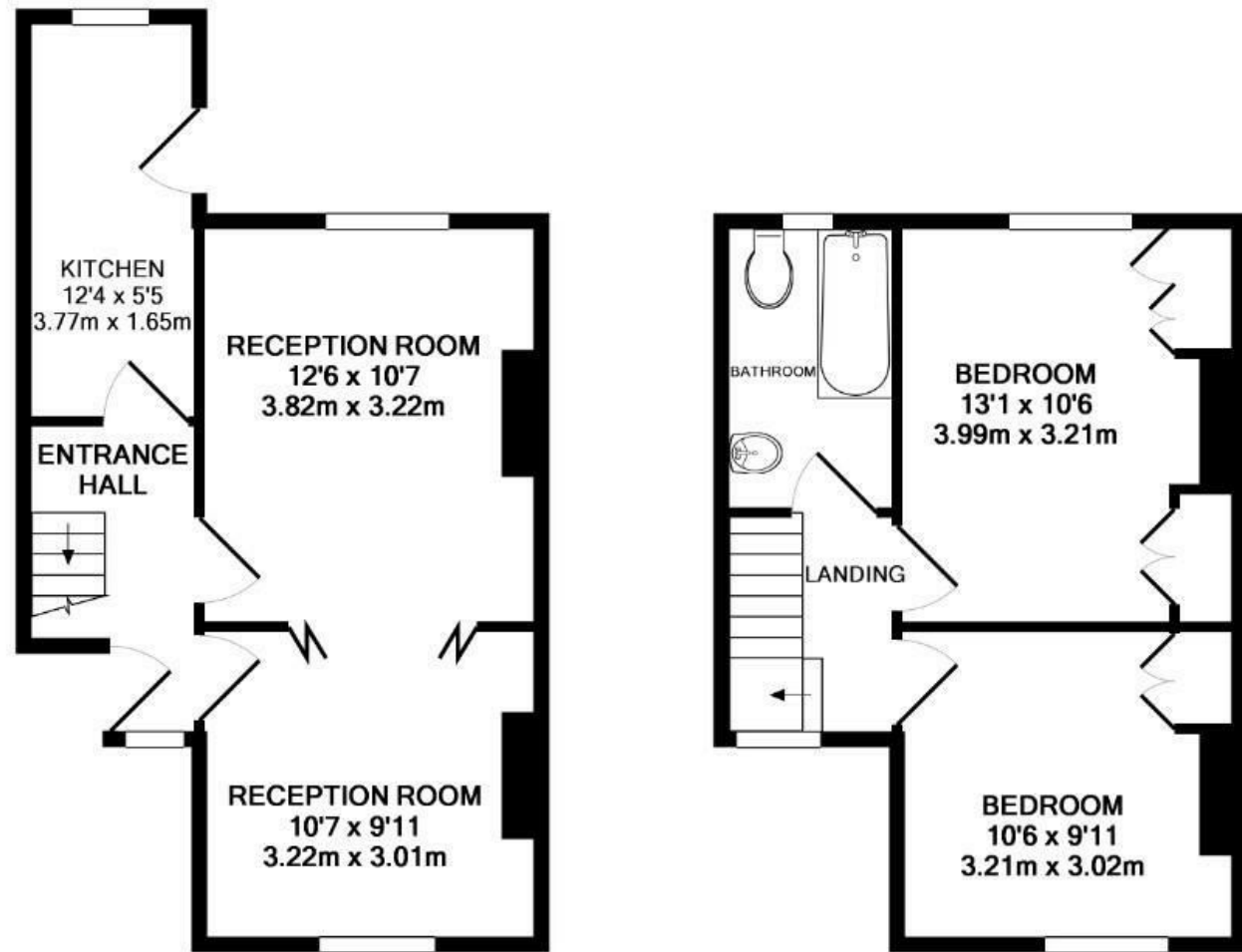
KEY FEATURES:

- NEAR TO EAST ACTON TUBE
- TWO BEDROOM HOUSE
- THROUGH RECEPTION
- FITTED KITCHEN
- MODERN SPACIOUS BATHROOM
- USEFUL LOFT SPACE POTENTIAL
- GAS CENTRAL HEATING
- SECLUDED REAR GARDEN
- FRONT GARDEN

Pleasantly situated overlooking a green within a few minutes walk to East Acton Central line tube is this TWO DOUBLE BEDROOM TERRACED HOUSE. with easy access for local bus routes to Westfields shopping centre, the A40 and the West End.

The house has a THROUGH RECEPTION with sliding doors, fitted kitchen leading to a pleasant secluded garden, 2 bedrooms, spacious bathroom with window and a very useful loft area with windows and pull down ladder.

Total approx. Floor Area 342 SQ.FT (31.8 SQ M.)



GROUND FLOOR
APPROX. FLOOR
AREA 342 SQ.FT.
(31.8 SQ.M.)

1ST FLOOR
APPROX. FLOOR
AREA 315 SQ.FT.
(29.3 SQ.M.)

ERCONWALD STREET, LONDON, W12 0BU
TOTAL APPROX. FLOOR AREA 657 SQ.FT. (61.0 SQ.M.)
Measurements are approximate. Not to scale. Illustrative purposes only
Made with Metropix ©2019

